



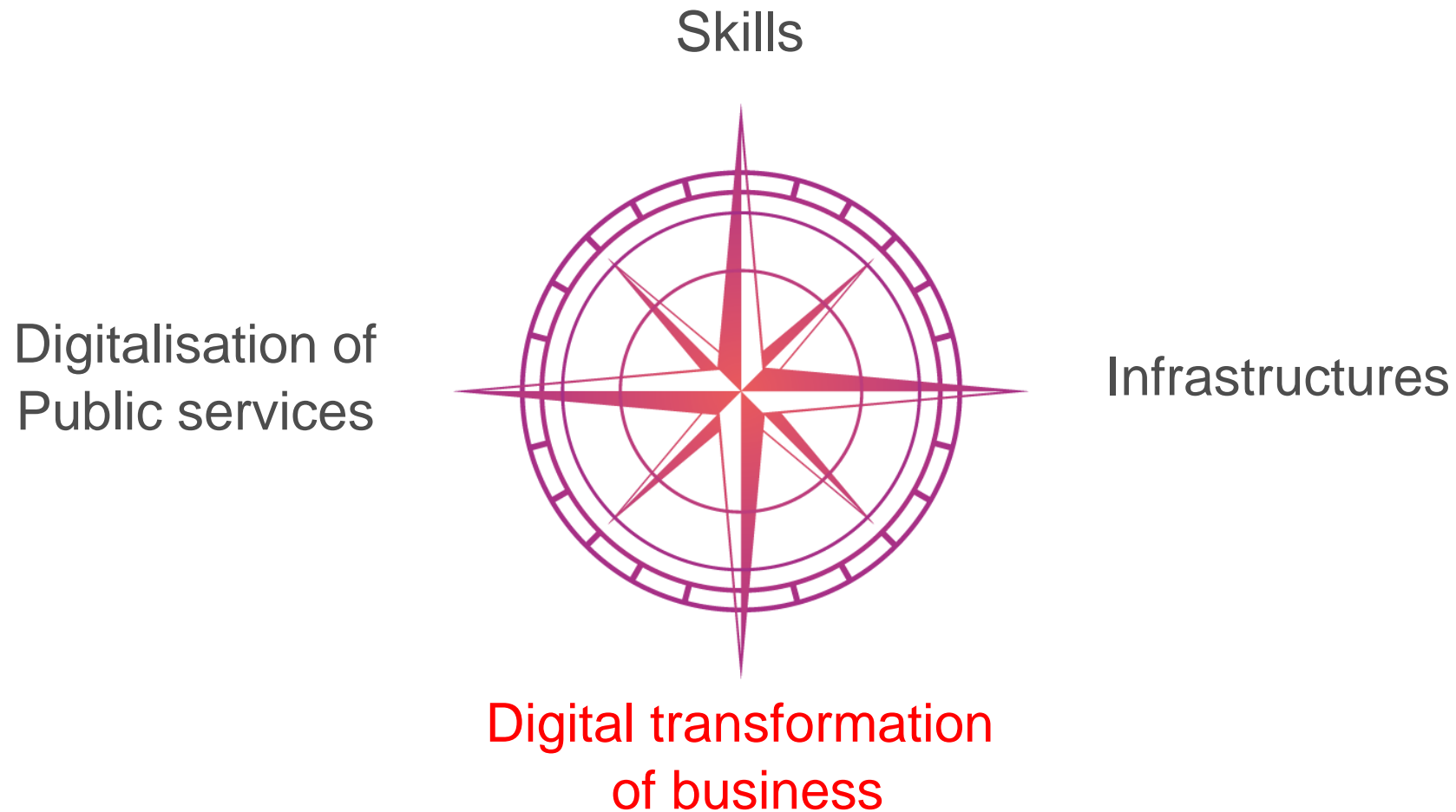
European Digital Innovation Hubs (EDIHs)

Malgorzata Nikowska

DG CNECT A4 – Digital Transformation of Industrial Ecosystems

26.10.2022

Digital Decade – Europe's digital transformation until 2030

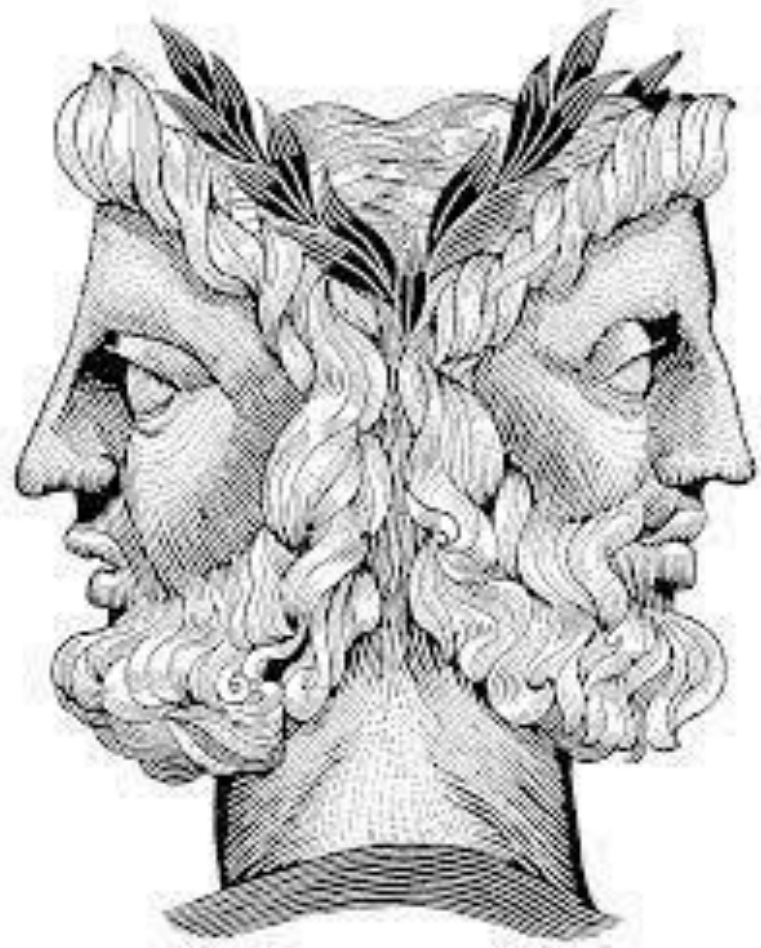


Digital Decade 2030 Targets

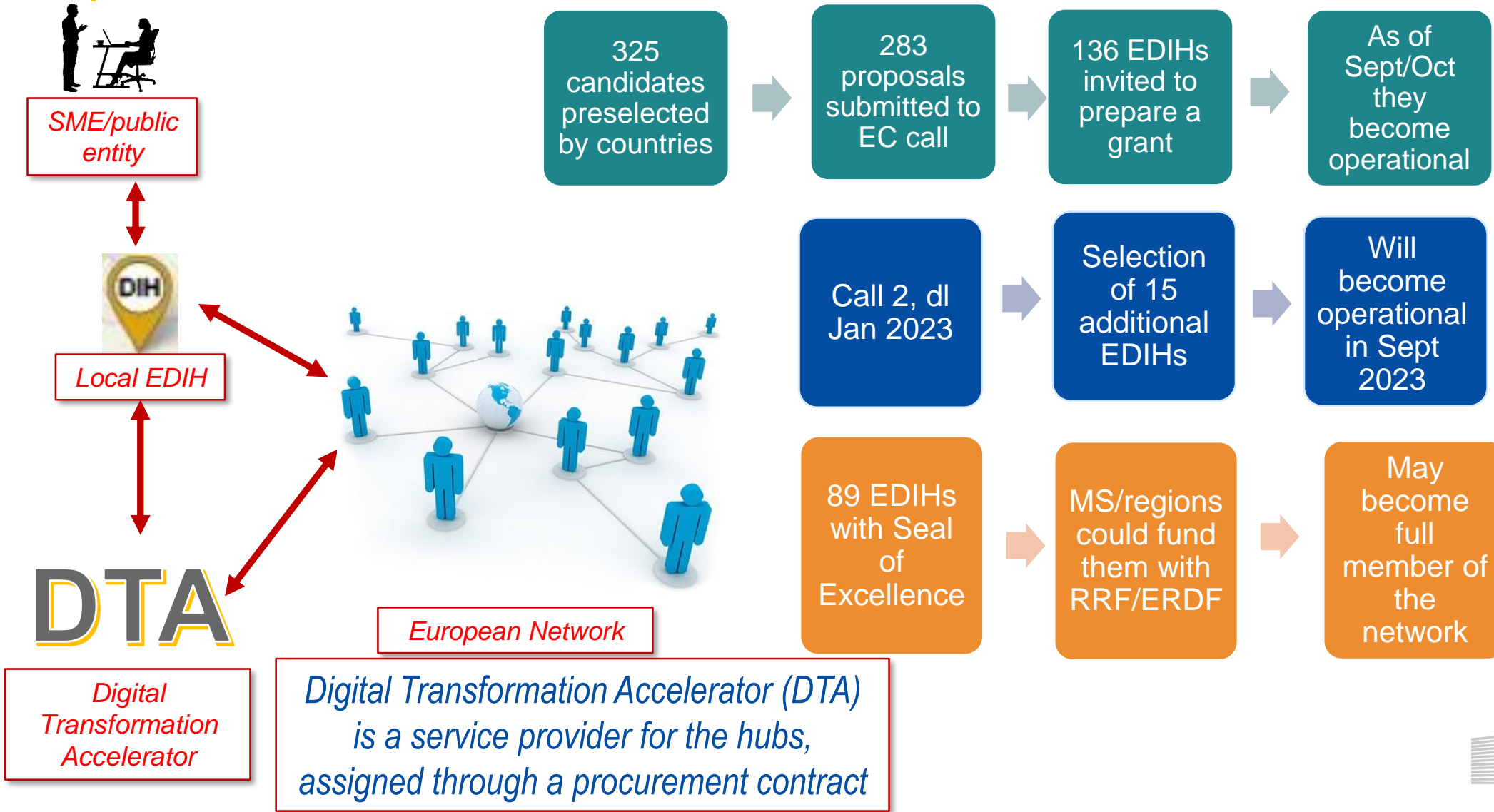
		EU Baseline	2030 Target
Skills	ICT specialists (<u>nbr</u> employed)	7.844.100	20.000.000
	<i>Gender distribution</i>	18% of women	convergence
	Basic digital skills	56%	80%
Infrastructures	Gigabit coverage	59%	100%
	5G in all populated areas	14%	100%
	Semiconductors (EU share of global production)	10%	20%
	Edge/Cloud (<u>nbr</u> of nodes)	0	10.000
	Quantum Computer	0	1
Business	Cloud Uptake	26%	75%
	Big Data Uptake	14%	75%
	AI Uptake	25%	75%
	SMEs with at least basic level of digital intensity	61%	90%
	EU Unicorns (<u>nbr</u>)	122	250
Government	Key Public Services Online (service completion score)	75	100
	Medical records availability	N.A.	100%
	Digital Identity Adoption	N.A.	80%

European Digital Innovation Hubs (EDIHs)

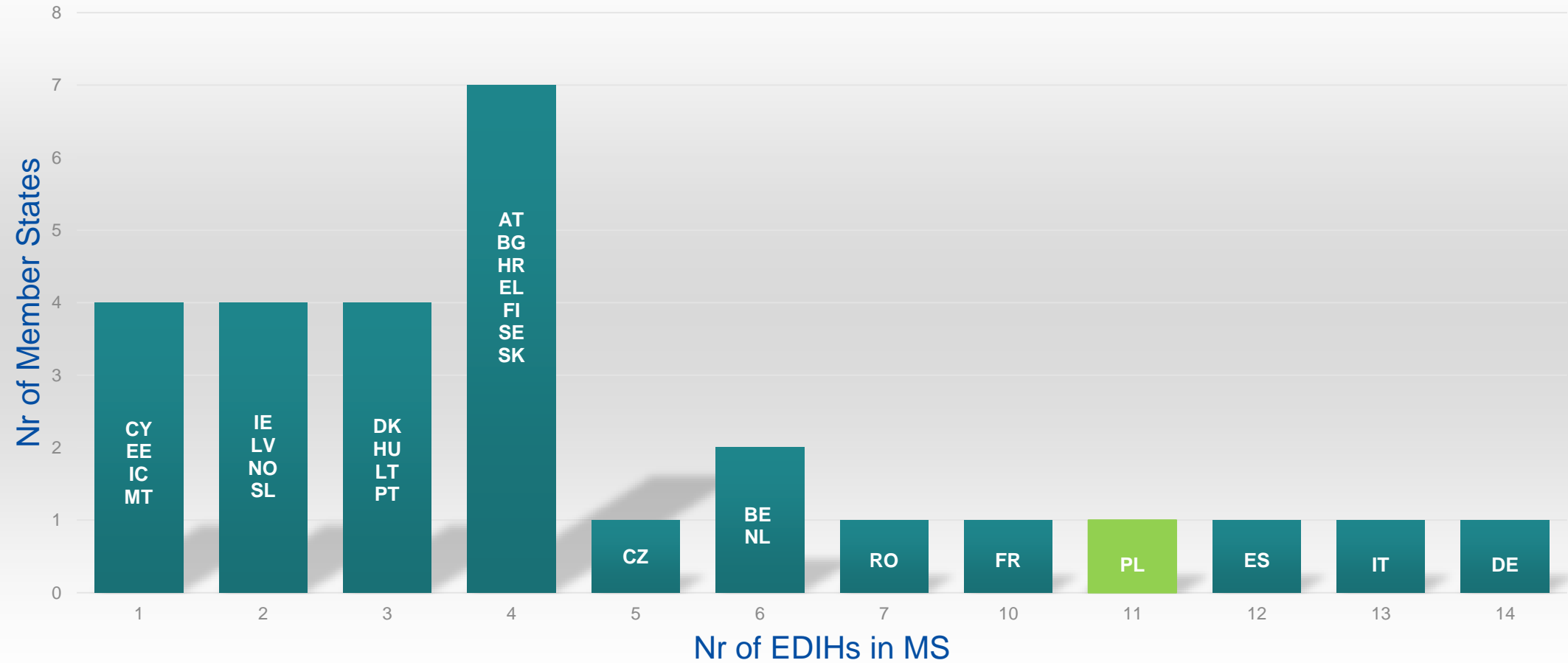
- to stimulate the broad uptake of Artificial Intelligence, High Performance Computing (HPC) and Cybersecurity
- to help companies become more competitive, by providing access to technical expertise and experimentation (“test before invest”) and by Digital Maturity Assessment
- to provide innovation services, such as financing advice, training and skills development
- to support sustainable digital transformation, in particular with regard to energy consumption and low carbon emissions



Creation of the network of EDIHs

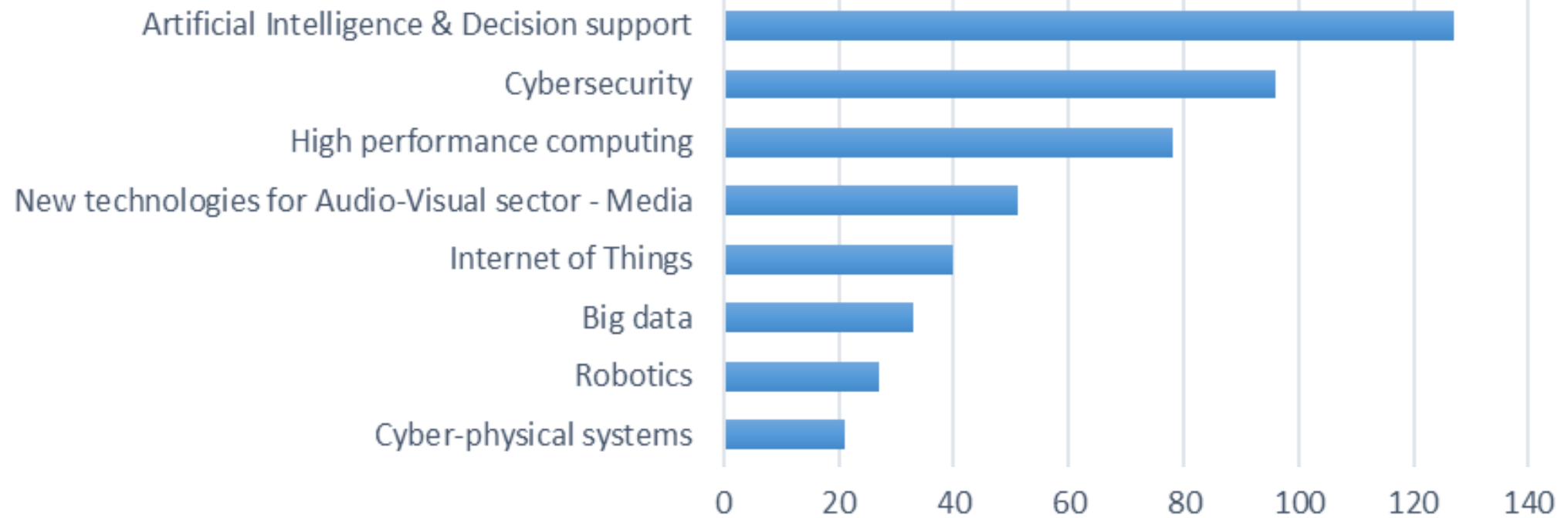


Nr of EDIHs in Member States

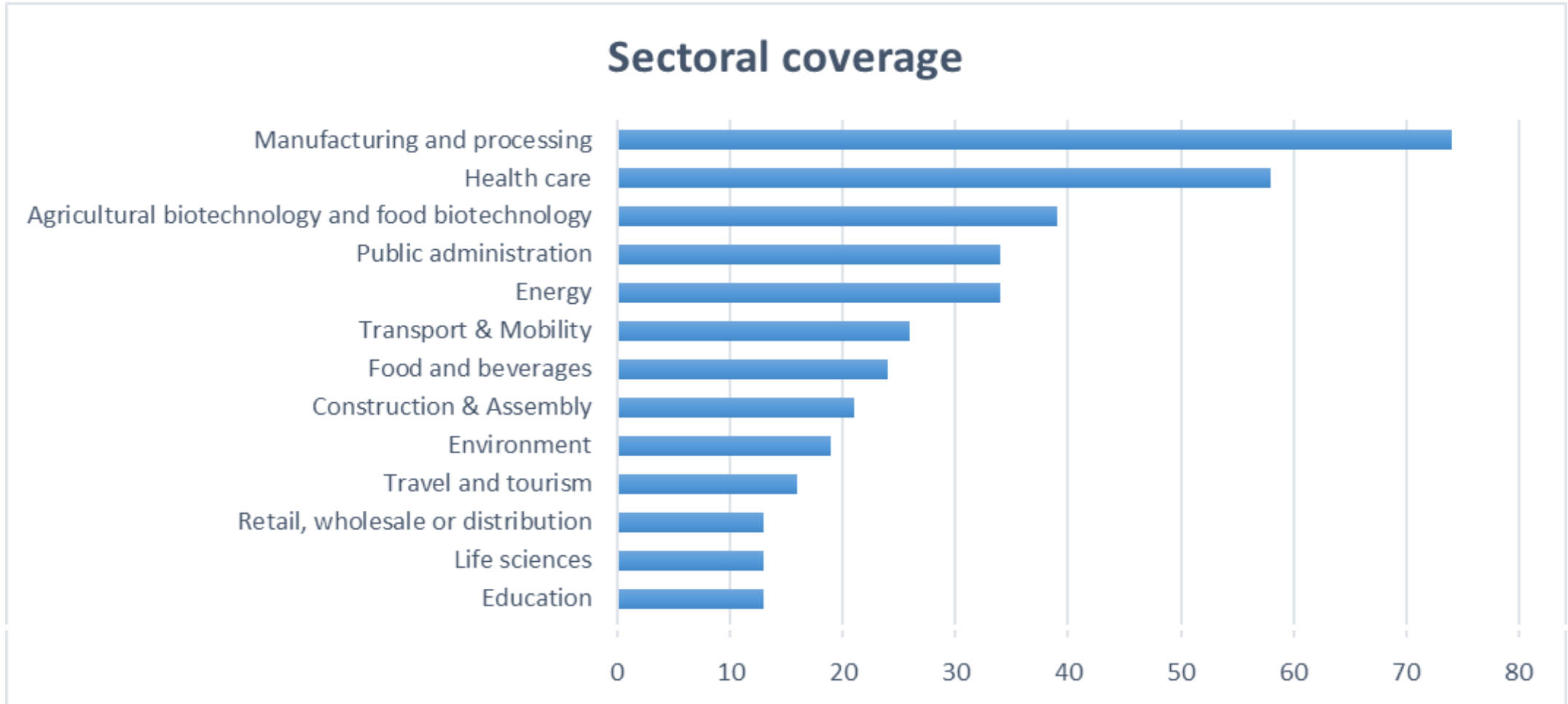


Funded proposals

Technological coverage



Funded proposals



European Digital Innovation Hubs' (EDIH) network

- EUR 750 m to assist the setup of an EU-wide network of European Digital Innovation Hubs (EDIHs) via the Digital Europe program
- Member States will also contribute (50% co-funding) with the possibility of contributions from the private sector
- Some Member States also chose to fund extra-hubs (30-50) under the Recovery and Resilience Fund (RRF). 26% of this RRF is dedicated to digital reforms and investments. 20% of the fund goes to businesses.
- Lastly, Member States can also rely on synergy funding to support their hubs e.g. ERDF

Keep in touch



ec.europa.eu/



europa.eu/



[@EU_Commission](https://twitter.com/EU_Commission)



[@EuropeanCommission](https://www.facebook.com/EuropeanCommission)



[European Commission](https://www.linkedin.com/company/european-commission)



[europeancommission](https://www.instagram.com/europeancommission)



[@EuropeanCommission](https://www.medium.com/@EuropeanCommission)



[EUTube](https://www.youtube.com/EUTube)



[EU Spotify](https://www.spotify.com/eu)

Thank you – Questions?



© European Union 2020

Unless otherwise noted the reuse of this presentation is authorised under the [CC BY 4.0](https://creativecommons.org/licenses/by/4.0/) license. For any use or reproduction of elements that are not owned by the EU, permission may need to be sought directly from the respective right holders.

Slide xx: [element concerned](#), source: [e.g. Fotolia.com](#); Slide xx: [element concerned](#), source: [e.g. iStock.com](#)

